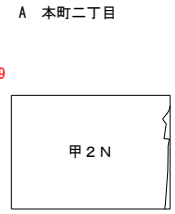
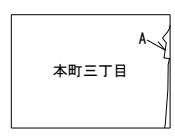
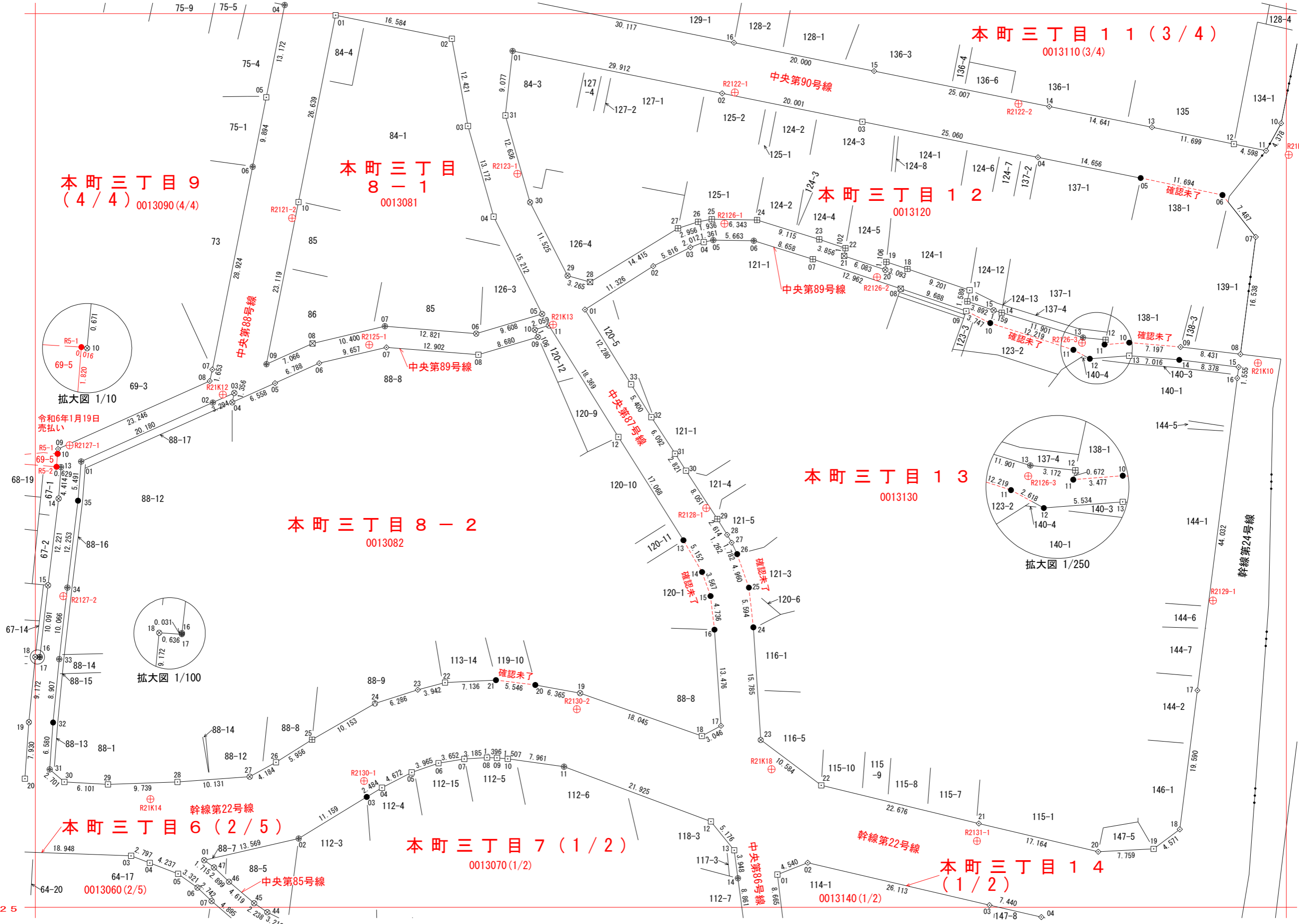
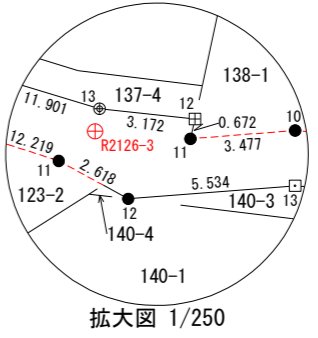
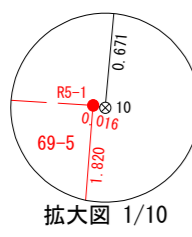


IX (世界測地系) 埼玉県川口市境界確定図



T'32-3	T'32-4	T'33-3
T'42-1		T'43-1
T'42-3	T'42-4	



⊕	基準点
⊗	市石杭
◇	市プレート
⊙	市旗
⊠	国調プレート
⊕	民石杭
⊙	民プレート
⊗	民旗
⊠	県石杭
⊕	国プレート
⊙	県石杭
⊗	市プレート
○	J R 石杭等
□	J R プレート等
●	計算点

-22.125
-9.975

川 T'42-2	2020.12 調査
1:500	2021.1 測図

※街区境界調査が完了した後に確定した筆は、確認日を記入し、赤実線・赤文字・街区境界未定に()付けで表記する。

座標一覧表

座標一覧表

座標一覧表

座標一覧表

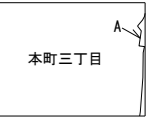
座標一覧表

座標一覧表

点名	X座標	Y座標	点名	X座標	Y座標	点名	X座標	Y座標	点名	X座標	Y座標	点名	X座標	Y座標	点名	X座標	Y座標
基準点座標			0013060			0013082			0013090			0013120			0013130		
R21K09	-22019.740	-9799.669	0013060-03	-22117.802	-9961.599	0013082-01	-22062.644	-9968.589	0013090-04	-21998.780	-9940.120	0013120-01	-22005.209	-9908.234	0013130-01	-22041.397	-9898.114
R21K10	-22048.861	-9803.992	0013060-04	-22118.801	-9958.986	0013082-02	-22054.393	-9950.172	0013090-05	-22011.700	-9942.685	0013120-02	-22011.144	-9878.916	0013130-02	-22035.316	-9888.558
R21K12	-22053.280	-9948.776	0013060-05	-22120.320	-9955.030	0013082-03	-22053.048	-9947.165	0013090-06	-22021.410	-9944.588	0013120-03	-22015.113	-9859.312	0013130-03	-22032.691	-9883.368
R21K13	-22043.497	-9902.587	0013060-06	-22122.241	-9952.320	0013082-04	-22054.375	-9947.448	0013090-07	-22049.777	-9950.238	0013120-04	-22020.094	-9834.751	0013130-04	-22031.946	-9881.499
R21K14	-22109.877	-9958.907	0013060-07	-22124.136	-9950.338	0013082-05	-22051.683	-9941.467	0013090-08	-22051.392	-9950.594	0013120-05	-22022.988	-9820.383	0013130-05	-22031.682	-9880.163
R21K18	-22105.695	-9872.017	0013070			0013082-06	-22048.893	-9935.278	0013090-09	-22060.897	-9971.809	0013120-06	-22025.366	-9808.933	0013130-06	-22031.764	-9874.500
R2121-2	-22028.601	-9939.083	0013070-01	-22118.411	-9951.381	0013082-07	-22046.673	-9925.879	0013090-10	-22061.566	-9971.869	0013120-07	-22031.236	-9804.284	0013130-07	-22034.344	-9866.235
R2122-1	-22011.016	-9877.154	0013070-02	-22115.380	-9938.154	0013082-08	-22047.710	-9913.018	0013090-11	-22061.404	-9973.902	0013120-08	-22047.635	-9806.431	0013130-08	-22038.464	-9853.945
R2122-2	-22012.604	-9837.483	0013070-03	-22109.559	-9928.633	0013082-09	-22045.234	-9904.698	0013090-13	-22063.427	-9971.401	0013120-09	-22046.620	-9814.801	0013130-09	-22041.607	-9844.781
R2123-1	-22022.389	-9907.563	0013070-04	-22108.278	-9926.504	0013082-10	-22044.215	-9905.128	0013090-14	-22067.828	-9971.746	0013120-10	-22046.015	-9821.973	0013130-10	-22043.277	-9841.426
R2125-1	-22046.308	-9928.293	0013070-05	-22106.139	-9922.350	0013082-11	-22043.625	-9903.155	0013090-15	-22079.960	-9973.222	0013120-11	-22046.287	-9825.440	0013130-11	-22047.016	-9829.793
R2126-1	-22029.377	-9878.599	0013070-06	-22104.845	-9918.602	0013082-12	-22059.211	-9893.433	0013090-16	-22089.986	-9974.369	0013120-12	-22045.631	-9825.292	0013130-12	-22048.274	-9827.496
R2126-2	-22036.844	-9857.263	0013070-07	-22104.262	-9914.996	0013082-13	-22073.658	-9884.344	0013090-17	-22090.017	-9974.372	0013120-13	-22045.298	-9828.447	0013130-13	-22047.842	-9821.978
R2126-3	-22046.042	-9828.589	0013070-08	-22104.056	-9911.817	0013082-14	-22078.105	-9881.741	0013090-18	-22089.976	-9975.007	0013120-14	-22041.827	-9839.831	0013130-14	-22048.431	-9814.986
R2127-1	-22060.376	-9970.204	0013070-09	-22104.098	-9910.421	0013082-15	-22081.468	-9880.550	0013090-19	-22099.105	-9975.898	0013120-15	-22041.490	-9840.940	0013130-15	-22049.440	-9806.668
R2127-2	-22081.482	-9971.088	0013070-10	-22104.241	-9908.920	0013082-16	-22086.172	-9880.000	0013090-20	-22107.016	-9976.454	0013120-16	-22040.245	-9844.628	0013130-16	-22050.982	-9806.870
R2128-1	-22069.165	-9881.151	0013070-11	-22105.332	-9901.034	0013082-17	-22099.617	-9879.079	0013110			0013120-17	-22038.687	-9844.311	0013130-17	-22094.660	-9812.444
R2129-1	-22082.091	-9810.274	0013070-12	-22113.002	-9880.494	0013082-18	-22101.044	-9881.771	0013110-10	-22015.328	-9800.736	0013120-18	-22035.706	-9853.016	0013130-18	-22114.095	-9814.910
R2130-1	-22107.335	-9929.017	0013070-13	-22117.025	-9877.236	0013082-19	-22095.051	-9898.792	0013110-11	-22019.166	-9802.844	0013120-19	-22034.724	-9855.950	0013130-19	-22116.833	-9818.571
R2130-2	-22097.284	-9899.249	0013070-14	-22120.940	-9876.723	0013082-20	-22093.908	-9905.054	0013110-12	-22018.228	-9807.346	0013120-20	-22035.821	-9856.098	0013130-20	-22117.241	-9826.320
R2131-1	-22115.719	-9843.279	0013070-44	-22125.694	-9942.544	0013082-21	-22093.224	-9910.558	0013110-13	-22015.878	-9818.807	0013120-21	-22033.888	-9861.866	0013130-21	-22113.287	-9843.023
			0013070-45	-22124.433	-9944.393	0013082-22	-22093.571	-9917.686	0013110-14	-22012.997	-9833.162	0013120-22	-22032.801	-9861.682	0013130-22	-22107.947	-9865.062
			0013070-46	-22121.429	-9947.902	0013082-23	-22094.574	-9921.499	0013110-15	-22008.026	-9857.670	0013120-23	-22031.576	-9865.339	0013130-23	-22101.595	-9873.529
			0013070-47	-22119.424	-9949.997	0013082-24	-22096.490	-9927.486	0013110-16	-22004.058	-9877.273	0013120-24	-22028.859	-9874.040	0013130-24	-22085.843	-9874.559
			0013081			0013082-25	-22101.557	-9936.285				0013120-25	-22028.755	-9880.383	0013130-25	-22080.284	-9875.185
			0013081-01	-22000.220	-9932.992	0013082-26	-22104.723	-9941.330				0013120-26	-22029.113	-9882.286	0013130-26	-22075.601	-9876.821
			0013081-02	-22003.502	-9916.735	0013082-27	-22106.724	-9945.005				0013120-27	-22030.029	-9885.097	0013130-27	-22073.993	-9877.591
			0013081-03	-22015.718	-9914.485	0013082-28	-22107.469	-9955.109				0013120-28	-22037.539	-9897.402	0013130-28	-22072.895	-9878.214
			0013081-04	-22028.390	-9910.888	0013082-29	-22107.813	-9964.842				0013120-29	-22036.648	-9900.544	0013130-29	-22070.681	-9879.604
			0013081-05	-22042.011	-9904.114	0013082-30	-22107.470	-9970.934				0013120-30	-22026.386	-9905.791	0013130-30	-22063.924	-9883.982
			0013081-06	-22044.751	-9913.324	0013082-31	-22105.711	-9972.985				0013120-31	-22014.230	-9909.241	0013130-31	-22061.551	-9885.508
			0013081-07	-22043.723	-9926.104	0013082-32	-22099.148	-9972.508							0013130-32	-22056.443	-9888.828
			0013081-08	-22046.125	-9936.223	0013082-33	-22090.282	-9971.654							0013130-33	-22051.849	-9891.667
			0013081-09	-22049.029	-9942.665	0013082-34	-22080.281	-9970.510							0013140		
			0013081-10	-22026.349	-9938.180	0013082-35	-22068.118	-9969.027							0013140-01	-22120.419	-9871.188
															0013140-02	-22118.763	-9866.960
															0013140-03	-22124.699	-9841.530
															0013140-04	-22126.371	-9834.280

令和6年1月19日売払い

0013090		
0013090-R5-1	-22061.563	-9971.885
0013090-R5-2	-22063.378	-9972.029



A 本町二丁目



T ¹ 32-3	T ¹ 32-4	T ¹ 33-3
T ¹ 42-1		T ¹ 43-1
T ¹ 42-3	T ¹ 42-4	