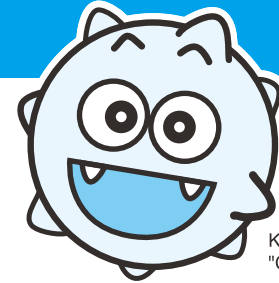




家庭ごみ収集日早見表

The Simplified Chart for Domestic Garbage Collection Day

Kawaguchi City
"Gomimaru"How to look at
"The Simplified Chart for Domestic Garbage Collection Day"

〇〇(town) 〇-chome, Kawaguchi City

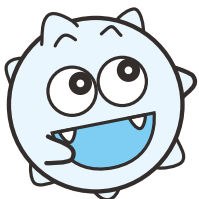
(Example: Bottles and cans for beverages, plastic bottles and fabric)

For the calendar
shown below

Bottles and cans for beverages the 2nd and 4th Fridays ➔ Days 10th and 24th

Plastic bottles and fabric the 1st and 3rd Mondays ➔ Days 6th and 20th

Plastic bottles and fabric are collected on the 1st and 3rd Mondays. The 1st and 3rd Monday of this month will be 6th and 20th according to the calendar shown on the right.



The day 6th is a national holiday, but we collect domestic garbage even on holidays. Exceptions are the year-end and New Year holidays.



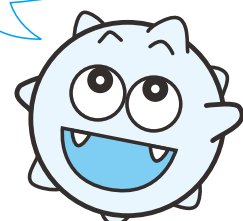
Month 〇 in the calendar

Sun	Mon	Tue	Wed	Thu	Fri	Sat
.	.	.	1	2	3	4
5	6	7	8	9	10	11
12	13	14	15	16	17	18
19	20	21	22	23	24	25
26	27	28	29	30	31	.

Bottles and cans for beverages are collected on the 2nd and 4th Fridays. The 2nd and 4th Friday of the month will be 10th and 24th according to the calendar shown above.



Since the domestic garbage collection days vary according to the area you live in, check the details on this pamphlet.



The Simplified Chart for Domestic Garbage Collection Day

Domestic garbage is collected even on holidays (except the year-end and New Year holidays).

Address		Bottles and cans for beverages Twice a month	Metal and paper Twice a month	Plastic bottles and fabric Twice a month	Plastic containers and packaging Once a week	Regular garbage and harmful garbage Twice a week
Aoki 1 through 5-chome (青木1〜5丁目)		the 1st and 3rd Thursdays	the 2nd and 4th Fridays	the 2nd and 4th Thursdays		Monday and Thursday
Akai (赤井)		the 1st and 3rd Thursdays	the 2nd and 4th Fridays	the 2nd and 4th Thursdays		Tuesday and Friday
Akai 1 through 4-chome (赤井1〜4丁目)		the 1st and 3rd Thursdays	the 2nd and 4th Fridays	the 2nd and 4th Thursdays		Tuesday and Friday
Akashiba-Shinden (赤芝新田)		the 2nd and 4th Mondays	the 1st and 3rd Tuesdays	the 1st and 3rd Mondays		Tuesday and Friday
Akayama (赤山)		the 2nd and 4th Mondays	the 1st and 3rd Tuesdays	the 1st and 3rd Mondays		Tuesday and Friday
Asahi 1 through 6-chome (朝日1〜6丁目)		the 1st and 3rd Thursdays	the 2nd and 4th Fridays	the 2nd and 4th Thursdays		Tuesday and Friday
Araiuku (新井宿)		the 2nd and 4th Mondays	the 1st and 3rd Tuesdays	the 1st and 3rd Mondays		Tuesday and Friday
Arai-cho (新井町)		the 1st and 3rd Fridays	the 2nd and 4th Mondays	the 2nd and 4th Fridays		Tuesday and Friday
Angyo (安行)		the 2nd and 4th Thursdays	the 1st and 3rd Fridays	the 1st and 3rd Thursdays		Tuesday and Friday
Angyo-Kitaya (安行北谷)		the 2nd and 4th Thursdays	the 1st and 3rd Fridays	the 1st and 3rd Thursdays		Tuesday and Friday
Angyo-Kichizo (安行吉蔵)		the 2nd and 4th Thursdays	the 1st and 3rd Fridays	the 1st and 3rd Thursdays		Tuesday and Friday
Angyo-Koyama (安行小山)		the 2nd and 4th Thursdays	the 1st and 3rd Fridays	the 1st and 3rd Thursdays		Tuesday and Friday
Angyo-Jirin (安行慈林)		the 2nd and 4th Thursdays	the 1st and 3rd Fridays	the 1st and 3rd Thursdays		Tuesday and Friday
Angyo-Dewa 1 through 5-chome (安行出羽1〜5丁目)		the 2nd and 4th Thursdays	the 1st and 3rd Fridays	the 1st and 3rd Thursdays		Tuesday and Friday
Angyo-Tohachi (安行藤八)		the 2nd and 4th Thursdays	the 1st and 3rd Fridays	the 1st and 3rd Thursdays		Tuesday and Friday
Angyo-Nishitaten (安行西立野)		the 2nd and 4th Thursdays	the 1st and 3rd Fridays	the 1st and 3rd Thursdays		Tuesday and Friday
Angyo-Hara (安行原)		the 2nd and 4th Thursdays	the 1st and 3rd Fridays	the 1st and 3rd Thursdays		Tuesday and Friday
Angyo-Yoshioka (安行吉岡)		the 2nd and 4th Thursdays	the 1st and 3rd Fridays	the 1st and 3rd Thursdays		Tuesday and Friday
Angyo-Ryoke (安行領家)		the 2nd and 4th Thursdays	the 1st and 3rd Fridays	the 1st and 3rd Thursdays		Tuesday and Friday
Angyoryo-Zaika (安行領在家)		the 2nd and 4th Mondays	the 1st and 3rd Tuesdays	the 1st and 3rd Mondays		Tuesday and Friday
Angyoryo-Negishi (安行領根岸)	Negishidaiichi-chokai (根岸第1町会)	the 2nd and 4th Mondays	the 1st and 3rd Tuesdays	the 1st and 3rd Mondays		Monday and Thursday
	the other zones (その他の地区)	the 2nd and 4th Mondays	the 1st and 3rd Tuesdays	the 1st and 3rd Mondays		Tuesday and Friday
Iizuka 1 through 4-chome (飯塚1〜4丁目)		the 1st and 3rd Mondays	the 2nd and 4th Tuesdays	the 2nd and 4th Mondays	Wednesdays	Tuesday and Friday
Iihara-cho (飯原町)		the 1st and 3rd Mondays	the 2nd and 4th Tuesdays	the 2nd and 4th Mondays		Tuesday and Friday
Ikari (伊刈)		the 2nd and 4th Tuesdays	the 1st and 3rd Wednesdays	the 1st and 3rd Tuesdays		Monday and Thursday
Ishigami (石神)		the 2nd and 4th Mondays	the 1st and 3rd Tuesdays	the 1st and 3rd Mondays		Tuesday and Friday
Edo 1 through 3-chome (江戸1〜3丁目)		the 1st and 3rd Thursdays	the 2nd and 4th Fridays	the 2nd and 4th Thursdays		Tuesday and Friday
Edobukuro 1 and 2-chome (江戸袋1・2丁目)		the 1st and 3rd Thursdays	the 2nd and 4th Fridays	the 2nd and 4th Thursdays		Tuesday and Friday
Otake (大竹)		the 2nd and 4th Thursdays	the 1st and 3rd Fridays	the 1st and 3rd Thursdays		Tuesday and Friday
Kanayama-cho (金山町)		the 1st and 3rd Mondays	the 2nd and 4th Tuesdays	the 2nd and 4th Mondays		Monday and Thursday
Kami-Aoki 1 through 6-chome (上青木1〜6丁目)		the 1st and 3rd Wednesdays	the 2nd and 4th Thursdays	the 2nd and 4th Wednesdays		Monday and Thursday
Kami-Aoki-Nishi 1 through 5-chome (上青木西1〜5丁目)		the 1st and 3rd Wednesdays	the 2nd and 4th Thursdays	the 2nd and 4th Wednesdays		Monday and Thursday
Kawaguchi 1-chome (川口1丁目)		the 1st and 3rd Mondays	the 2nd and 4th Tuesdays	the 2nd and 4th Mondays		Monday and Thursday
Kawaguchi 2 through 4-chome (川口2〜4丁目)		the 1st and 3rd Mondays	the 2nd and 4th Tuesdays	the 2nd and 4th Mondays		Tuesday and Friday
Kawaguchi 5 and 6-chome (川口5・6丁目)		the 1st and 3rd Tuesdays	the 2nd and 4th Wednesdays	the 2nd and 4th Tuesdays		Tuesday and Friday
Kizoro (木曾呂)	Fujitsutsumishita (藤堤下)	the 2nd and 4th Mondays	the 1st and 3rd Tuesdays	the 1st and 3rd Mondays		Monday and Thursday
	the other zones (その他の地区)	the 2nd and 4th Mondays	the 1st and 3rd Tuesdays	the 1st and 3rd Mondays		Tuesday and Friday
Kitazono-cho (北園町)		the 2nd and 4th Mondays	the 1st and 3rd Tuesdays	the 1st and 3rd Mondays		Monday and Thursday
Kitahara-dai 1 through 3-chome (北原台1〜3丁目)		the 2nd and 4th Fridays	the 1st and 3rd Mondays	the 1st and 3rd Fridays		Tuesday and Friday
Kyuzaeon-Shinden (久左衛門新田)		the 2nd and 4th Fridays	the 1st and 3rd Mondays	the 1st and 3rd Fridays		Tuesday and Friday
Gyoe (行衛)		the 2nd and 4th Fridays	the 1st and 3rd Mondays	the 1st and 3rd Fridays		Tuesday and Friday
Genzaemon-Shinden (源左衛門新田)	Sashima-chokai (差間町会)	the 2nd and 4th Fridays	the 1st and 3rd Mondays	the 1st and 3rd Fridays		Tuesday and Friday
	the other zones (その他の地区)	the 2nd and 4th Mondays	the 1st and 3rd Tuesdays	the 1st and 3rd Mondays		Tuesday and Friday
Goudo (Kamine) (神戸(神根))		the 2nd and 4th Mondays	the 1st and 3rd Tuesdays	the 1st and 3rd Mondays		Tuesday and Friday
Koyaba (小谷場)		the 2nd and 4th Wednesdays	the 1st and 3rd Thursdays	the 1st and 3rd Wednesdays		Monday and Thursday

The Simplified Chart for Domestic Garbage Collection Day

Domestic garbage is collected even on holidays (except the year-end and New Year holidays).

Address		Bottles and cans for beverages Twice a month	Metal and paper Twice a month	Plastic bottles and fabric Twice a month	Plastic containers and packaging Once a week	Regular garbage and harmful garbage Twice a week
Zaike-cho (在家町)		the 2nd and 4th Mondays	the 1st and 3rd Tuesdays	the 1st and 3rd Mondays	Wednesdays	Monday and Thursday
Saiwai-cho 1 through 3-chome (幸町1〜3丁目)		the 1st and 3rd Mondays	the 2nd and 4th Tuesdays	the 2nd and 4th Mondays		Monday and Thursday
Sakae-cho 1 through 3-chome (栄町1〜3丁目)		the 1st and 3rd Mondays	the 2nd and 4th Tuesdays	the 2nd and 4th Mondays		Monday and Thursday
Sakashita-cho 1 and 2-chome (坂下町1・2丁目)		the 2nd and 4th Wednesdays	the 1st and 3rd Thursdays	the 1st and 3rd Wednesdays		Monday and Thursday
Sakashita-cho 3-chome (坂下町3丁目)		the 1st and 3rd Fridays	the 2nd and 4th Mondays	the 2nd and 4th Fridays		Monday and Thursday
Sakashita-cho 4-chome (坂下町4丁目)		the 2nd and 4th Thursdays	the 1st and 3rd Fridays	the 1st and 3rd Thursdays		Tuesday and Friday
Sakura-cho 1 and 2-chome (桜町1・2丁目)		the 1st and 3rd Tuesdays	the 2nd and 4th Wednesdays	the 2nd and 4th Tuesdays		Monday and Thursday
Sakura-cho 3 through 5-chome (桜町3〜5丁目)	Confore Higashi-Hatogaya (コンフォール東鳩ヶ谷)	the 1st and 3rd Wednesdays	the 2nd and 4th Thursdays	the 2nd and 4th Wednesdays		Tuesday and Friday
	the other zones (その他の地区)	the 2nd and 4th Fridays	the 1st and 3rd Mondays	the 1st and 3rd Fridays		Monday and Thursday
Sakura-cho 6-chome (桜町6丁目)		the 1st and 3rd Mondays	the 2nd and 4th Tuesdays	the 2nd and 4th Mondays		Tuesday and Friday
Sashima (差間)		the 2nd and 4th Fridays	the 1st and 3rd Mondays	the 1st and 3rd Fridays		Tuesday and Friday
Sashima 1 through 3-chome (差間1〜3丁目)		the 2nd and 4th Fridays	the 1st and 3rd Mondays	the 1st and 3rd Fridays		Tuesday and Friday
Sato (里)	Confore Nishi-Hatogaya (コンフォール西鳩ヶ谷)	the 1st and 3rd Tuesdays	the 2nd and 4th Wednesdays	the 2nd and 4th Tuesdays		Monday and Thursday
	the other zones (その他の地区)	the 2nd and 4th Mondays	the 1st and 3rd Tuesdays	the 1st and 3rd Mondays		Tuesday and Friday
Shiba (芝)		the 2nd and 4th Tuesdays	the 1st and 3rd Wednesdays	the 1st and 3rd Tuesdays		Monday and Thursday
Shiba 1 through 5-chome (芝1〜5丁目)		the 2nd and 4th Wednesdays	the 1st and 3rd Thursdays	the 1st and 3rd Wednesdays		Monday and Thursday
Shiba-Shimo 1 through 3-chome (芝下1〜3丁目)		the 2nd and 4th Tuesdays	the 1st and 3rd Wednesdays	the 1st and 3rd Tuesdays		Monday and Thursday
Shiba-Shinmachi (芝新町)		the 2nd and 4th Wednesdays	the 1st and 3rd Thursdays	the 1st and 3rd Wednesdays		Monday and Thursday
Shibazono-cho (芝園町)		the 2nd and 4th Wednesdays	the 1st and 3rd Thursdays	the 1st and 3rd Wednesdays		Monday and Thursday
Shiba-Takagi 1 and 2-chome (芝高木1・2丁目)		the 2nd and 4th Tuesdays	the 1st and 3rd Wednesdays	the 1st and 3rd Tuesdays		Monday and Thursday
Shiba-Tsakabara 1 and 2-chome (芝塚原1・2丁目)		the 2nd and 4th Tuesdays	the 1st and 3rd Wednesdays	the 1st and 3rd Tuesdays		Monday and Thursday
Shiba-Nakada 1 and 2-chome (芝中田1・2丁目)		the 2nd and 4th Wednesdays	the 1st and 3rd Thursdays	the 1st and 3rd Wednesdays		Monday and Thursday
Shiba-Nishi 1 and 2-chome (芝西1・2丁目)		the 2nd and 4th Tuesdays	the 1st and 3rd Wednesdays	the 1st and 3rd Tuesdays		Monday and Thursday
Shiba-Higashi-cho (芝東町)		the 2nd and 4th Tuesdays	the 1st and 3rd Wednesdays	the 1st and 3rd Tuesdays		Monday and Thursday
Shiba-Hinotsume 1 and 2-chome (芝樋ノ爪1・2丁目)		the 2nd and 4th Wednesdays	the 1st and 3rd Thursdays	the 1st and 3rd Wednesdays		Monday and Thursday
Shiba-Fuji 1 and 2-chome (芝富士1・2丁目)		the 2nd and 4th Wednesdays	the 1st and 3rd Thursdays	the 1st and 3rd Wednesdays		Monday and Thursday
Shiba-Miyane-cho (芝宮根町)		the 2nd and 4th Tuesdays	the 1st and 3rd Wednesdays	the 1st and 3rd Tuesdays		Monday and Thursday
Suehiro 1 through 3-chome (末広1〜3丁目)		the 1st and 3rd Fridays	the 2nd and 4th Mondays	the 2nd and 4th Fridays		Tuesday and Friday
Chozo 1 through 3-chome (長蔵1〜3丁目)		the 2nd and 4th Fridays	the 1st and 3rd Mondays	the 1st and 3rd Fridays		Tuesday and Friday
Chozo-Shinden (長蔵新田)		the 2nd and 4th Fridays	the 1st and 3rd Mondays	the 1st and 3rd Fridays		Tuesday and Friday
Tsuji (辻)		the 1st and 3rd Thursdays	the 2nd and 4th Fridays	the 2nd and 4th Thursdays		Tuesday and Friday
Tobe-Shinden (藤兵衛新田)		the 2nd and 4th Fridays	the 1st and 3rd Mondays	the 1st and 3rd Fridays		Tuesday and Friday
Tozuka 1 through 6-chome (戸塚1〜6丁目)		the 2nd and 4th Fridays	the 1st and 3rd Mondays	the 1st and 3rd Fridays		Tuesday and Friday
Tozukasakai-cho (戸塚境町)		the 2nd and 4th Fridays	the 1st and 3rd Mondays	the 1st and 3rd Fridays		Tuesday and Friday
Tozukahasami-cho (戸塚鉋町)		the 2nd and 4th Fridays	the 1st and 3rd Mondays	the 1st and 3rd Fridays		Tuesday and Friday
Tozuka-Higashi 1 through 4-chome (戸塚東1〜4丁目)		the 2nd and 4th Fridays	the 1st and 3rd Mondays	the 1st and 3rd Fridays		Tuesday and Friday
Tozuka-Minami 1 through 5-chome (戸塚南1〜5丁目)		the 2nd and 4th Fridays	the 1st and 3rd Mondays	the 1st and 3rd Fridays		Tuesday and Friday
Naka-Aoki 1 through 5-chome (中青木1〜5丁目)		the 1st and 3rd Wednesdays	the 2nd and 4th Thursdays	the 2nd and 4th Wednesdays		Monday and Thursday
Naka-cho (仲町)		the 1st and 3rd Tuesdays	the 2nd and 4th Wednesdays	the 2nd and 4th Tuesdays		Tuesday and Friday
Namiki 1 through 4-chome (並木1〜4丁目)		the 1st and 3rd Tuesdays	the 2nd and 4th Wednesdays	the 2nd and 4th Tuesdays		Monday and Thursday
Namiki-Motomachi (並木元町)		the 1st and 3rd Tuesdays	the 2nd and 4th Wednesdays	the 2nd and 4th Tuesdays		Monday and Thursday
Nihori (新堀)		the 2nd and 4th Thursdays	the 1st and 3rd Fridays	the 1st and 3rd Thursdays		Tuesday and Friday
Nihori-cho (新堀町)		the 2nd and 4th Thursdays	the 1st and 3rd Fridays	the 1st and 3rd Thursdays		Tuesday and Friday
Nishi-Aoki 1 through 5-chome (西青木1〜5丁目)		the 1st and 3rd Wednesdays	the 2nd and 4th Thursdays	the 2nd and 4th Wednesdays		Monday and Thursday

The Simplified Chart for Domestic Garbage Collection Day

Domestic garbage is collected even on holidays (except the year-end and New Year holidays).

Address		Bottles and cans for beverages Twice a month	Metal and paper Twice a month	Plastic bottles and fabric Twice a month	Plastic containers and packaging Once a week	Regular garbage and harmful garbage Twice a week
Nishi-Arajuku (西新井宿)		the 2nd and 4th Mondays	the 1st and 3rd Tuesdays	the 1st and 3rd Mondays	Wednesdays	Tuesday and Friday
Nishi-Kawaguchi 1 through 6-chome (西川 口1〜6丁目)		the 1st and 3rd Tuesdays	the 2nd and 4th Wednesdays	the 2nd and 4th Tuesdays		Tuesday and Friday
Nishi-Tateno (Tozuka) (西立野(戸塚))		the 2nd and 4th Fridays	the 1st and 3rd Mondays	the 1st and 3rd Fridays		Tuesday and Friday
Haematsu (榛松)		the 2nd and 4th Thursdays	the 1st and 3rd Fridays	the 1st and 3rd Thursdays		Tuesday and Friday
Haematsu 1 through 3-chome (榛松1〜3丁目)		the 2nd and 4th Thursdays	the 1st and 3rd Fridays	the 1st and 3rd Thursdays		Tuesday and Friday
Hasunuma (蓮沼)		the 1st and 3rd Thursdays	the 2nd and 4th Fridays	the 2nd and 4th Thursdays		Tuesday and Friday
Hachimangi 1 and 2-chome (八幡木1・2丁目)		the 2nd and 4th Tuesdays	the 1st and 3rd Wednesdays	the 1st and 3rd Tuesdays		Monday and Thursday
Hachimangi 3-chome (八幡木3丁目)		the 1st and 3rd Wednesdays	the 2nd and 4th Thursdays	the 2nd and 4th Wednesdays		Monday and Thursday
Hatogaya-Honcho 1-chome (鳩ヶ谷本町1丁目)		the 2nd and 4th Fridays	the 1st and 3rd Mondays	the 1st and 3rd Fridays		Monday and Thursday
Hatogaya-Honcho 2-chome (鳩ヶ谷本町2丁目)		the 1st and 3rd Mondays	the 2nd and 4th Tuesdays	the 2nd and 4th Mondays		Tuesday and Friday
Hatogaya-Honcho 3 and 4-chome (鳩ヶ谷本町3・4丁目)		the 1st and 3rd Wednesdays	the 2nd and 4th Thursdays	the 2nd and 4th Wednesdays		Tuesday and Friday
Hatogaya-Midori-cho 1 and 2-chome (鳩ヶ谷緑町1・2丁目)		the 2nd and 4th Wednesdays	the 1st and 3rd Thursdays	the 1st and 3rd Wednesdays		Tuesday and Friday
Hara-machi (原町)		the 1st and 3rd Tuesdays	the 2nd and 4th Wednesdays	the 2nd and 4th Tuesdays		Tuesday and Friday
Higashi-Uchino (東内野)		the 2nd and 4th Mondays	the 1st and 3rd Tuesdays	the 1st and 3rd Mondays		Tuesday and Friday
Higashi-Kaizuka (東貝塚)		the 2nd and 4th Thursdays	the 1st and 3rd Fridays	the 1st and 3rd Thursdays		Tuesday and Friday
Higashi-Kawaguchi 1 through 6-chome (東川 口1〜6丁目)		the 2nd and 4th Fridays	the 1st and 3rd Mondays	the 1st and 3rd Fridays		Tuesday and Friday
Higashi-Hongo (東本郷)		the 1st and 3rd Thursdays	the 2nd and 4th Fridays	the 2nd and 4th Thursdays		Tuesday and Friday
Higashi-Hongo 1 and 2-chome (東本郷1・2丁目)		the 1st and 3rd Thursdays	the 2nd and 4th Fridays	the 2nd and 4th Thursdays		Tuesday and Friday
Higashi-Ryoke 1 through 5-chome (東領家1〜5丁目)		the 1st and 3rd Fridays	the 2nd and 4th Mondays	the 2nd and 4th Fridays		Tuesday and Friday
Funato-cho (舟戸町)		the 1st and 3rd Mondays	the 2nd and 4th Tuesdays	the 2nd and 4th Mondays		Monday and Thursday
Hon-cho 1 through 4-chome (本町1〜4丁目)		the 1st and 3rd Mondays	the 2nd and 4th Tuesdays	the 2nd and 4th Mondays		Monday and Thursday
Honbasu 1 through 4-chome (本蓮1〜4丁目)		the 1st and 3rd Thursdays	the 2nd and 4th Fridays	the 2nd and 4th Thursdays		Tuesday and Friday
Honmaekawa 1 and 2-chome (本前川1・2丁目)		the 1st and 3rd Wednesdays	the 2nd and 4th Thursdays	the 2nd and 4th Wednesdays		Monday and Thursday
Honmaekawa 3-chome (本前川3丁目)	Negishidaichi-chokai (根岸第1町会)	the 2nd and 4th Mondays	the 1st and 3rd Tuesdays	the 1st and 3rd Mondays		Monday and Thursday
	the other zones (その他の地区)	the 1st and 3rd Wednesdays	the 2nd and 4th Thursdays	the 2nd and 4th Wednesdays		Monday and Thursday
Maekami-cho (前上町)		the 1st and 3rd Wednesdays	the 2nd and 4th Thursdays	the 2nd and 4th Wednesdays		Monday and Thursday
Maekawa 1 through 4-chome (前川1〜4丁目)		the 1st and 3rd Wednesdays	the 2nd and 4th Thursdays	the 2nd and 4th Wednesdays		Monday and Thursday
Maeda (前田)		the 2nd and 4th Thursdays	the 1st and 3rd Fridays	the 1st and 3rd Thursdays		Tuesday and Friday
Maenoshuku (前野宿)		the 2nd and 4th Thursdays	the 1st and 3rd Fridays	the 1st and 3rd Thursdays		Tuesday and Friday
Michiai (道合)		the 2nd and 4th Mondays	the 1st and 3rd Tuesdays	the 1st and 3rd Mondays		Tuesday and Friday
Mitsuwa 1 through 3-chome (三ツ和1〜3丁目)		the 1st and 3rd Fridays	the 2nd and 4th Mondays	the 2nd and 4th Fridays		Monday and Thursday
Midori-cho (緑町)		the 1st and 3rd Tuesdays	the 2nd and 4th Wednesdays	the 2nd and 4th Tuesdays		Tuesday and Friday
Minami-cho 1 and 2-chome (南町1・2丁目)		the 1st and 3rd Tuesdays	the 2nd and 4th Wednesdays	the 2nd and 4th Tuesdays		Tuesday and Friday
Minami-Hatogaya 1 and 2-chome (南鳩ヶ谷1・2丁目)		the 1st and 3rd Tuesdays	the 2nd and 4th Wednesdays	the 2nd and 4th Tuesdays		Monday and Thursday
Minami-Hatogaya 3 and 4-chome (南鳩ヶ谷3・4丁目)		the 2nd and 4th Tuesdays	the 1st and 3rd Wednesdays	the 1st and 3rd Tuesdays		Monday and Thursday
Minami-Hatogaya 5 and 6-chome (南鳩ヶ谷5・6丁目)		the 2nd and 4th Thursdays	the 1st and 3rd Fridays	the 1st and 3rd Thursdays		Tuesday and Friday
Minami-Hatogaya 7-chome (南鳩ヶ谷7丁目)		the 1st and 3rd Mondays	the 2nd and 4th Tuesdays	the 2nd and 4th Mondays		Tuesday and Friday
Minami-Hatogaya 8-chome (南鳩ヶ谷8丁目)		the 2nd and 4th Tuesdays	the 1st and 3rd Wednesdays	the 1st and 3rd Tuesdays		Monday and Thursday
Minami-Maekawa 1 and 2-chome (南前川1・2丁目)		the 2nd and 4th Wednesdays	the 1st and 3rd Thursdays	the 1st and 3rd Wednesdays		Monday and Thursday
Mine (峯)		the 2nd and 4th Thursdays	the 1st and 3rd Fridays	the 1st and 3rd Thursdays		Tuesday and Friday
Miya-cho (宮町)		the 1st and 3rd Tuesdays	the 2nd and 4th Wednesdays	the 2nd and 4th Tuesdays		Tuesday and Friday
Motogo 1 through 6-chome (元郷1〜6丁目)		the 1st and 3rd Fridays	the 2nd and 4th Mondays	the 2nd and 4th Fridays		Tuesday and Friday
Yanagisaki 1 through 5-chome (柳崎1〜5丁目)		the 2nd and 4th Tuesdays	the 1st and 3rd Wednesdays	the 1st and 3rd Tuesdays		Monday and Thursday
Yanane-cho (柳根町)		the 2nd and 4th Mondays	the 1st and 3rd Tuesdays	the 1st and 3rd Mondays		Monday and Thursday
Yahei 1 through 4-chome (弥平1〜4丁目)		the 1st and 3rd Fridays	the 2nd and 4th Mondays	the 2nd and 4th Fridays		Tuesday and Friday
Ryoke 1 through 5-chome (領家1〜5丁目)		the 1st and 3rd Fridays	the 2nd and 4th Mondays	the 2nd and 4th Fridays		Tuesday and Friday